

Kit



FRP Cartridge Kit

407034A
EN

For repairing the cartridge on the FRP catalyst pump.

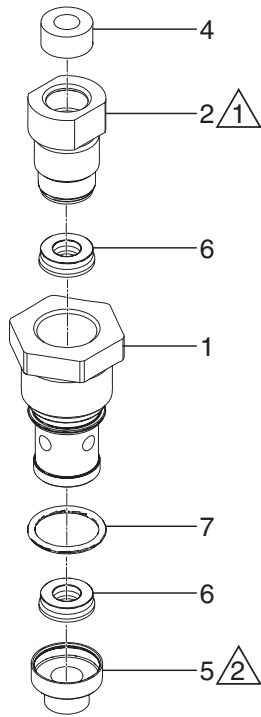


Important Safety Instructions


Read all warnings and instructions in FRP system manual. **Save all instructions.**


Part No. 24C479

Parts



Ref	Part	Description	Qty
1	16A655	CARTRIDGE, slave pump	1
2	16E399	BEARING, cartridge	1
4	16A670	WIPER, felt, piston rod	1
5	16A658	SEAL, snap on, cartridge	1
6	16A981	SEAL, slave pump weep	2
7	123556	O-RING, silicone #016	1

 Torque to 20–60 in-lb (2.3–6.8 N·m).

 Snap item 5 onto item 1.

All written and visual data contained in this document reflects the latest product information available at the time of publication.

Graco reserves the right to make changes at any time without notice.

For patent information, see www.graco.com/patents.

Original Instructions. This manual contains English. MM 407034

Graco Headquarters: Minneapolis

International Offices: Belgium, China, Japan, Korea

GRACO INC. AND SUBSIDIARIES • P.O. BOX 1441 • MINNEAPOLIS MN 55440-1441 • USA

Copyright 2012, Graco Inc. All Graco manufacturing locations are registered to ISO 9001.

www.graco.com